



SharePoint Remote List Viewer  
web part





Copyright © 2005-2013 KWizCom corporation. All rights reserved.

**Company Headquarters**

KWizCom  
50 McIntosh Drive, Unit 109  
Markham, Ontario  
ON L3R 9T3, Canada

E-mail: [info@KWizCom.com](mailto:info@KWizCom.com)

Web site: <http://www.KWizCom.com>

**Sales**

E-mail: [sales@KWizCom.com](mailto:sales@KWizCom.com)

Telephone: +1-905-370-0333



# Table of Contents

<b>Introduction</b> .....	<b>4</b>
Product Overview _____	5
Key Features _____	6
<b>Installation</b> .....	<b>7</b>
Software prerequisites _____	7
Installation Procedure _____	7
Post Installation _____	9
Un-installation _____	11
<b>Component Activation</b> .....	<b>12</b>
<b>Administrator Guide</b> .....	<b>18</b>
Introduction _____	18
Web Part Properties & Configuration Options _____	18
<b>FAQ</b> .....	<b>20</b>
What's the purpose of the Remote List Viewer web part? _____	20
Does it work on WSS/MOSS? _____	20
Do I have to install anything on my company's client-PCs? _____	20
How to hide the remote list's toolbar from the Remote List Viewer web part? _____	20
Does the add-on work with SharePoint 2010/2013 server/foundation? _____	20
<b>Technical Support</b> .....	<b>21</b>



## Introduction

**KWizCom Remote List Viewer web part** is the best solution to display lists that are located on other SharePoint sites.

Remote List Viewer web part supports MOSS2007/WSS3.0 and SharePoint 2010/2013 server/foundations.

This document provides all the information needed to install, evaluate and deploy this KWizCom product:

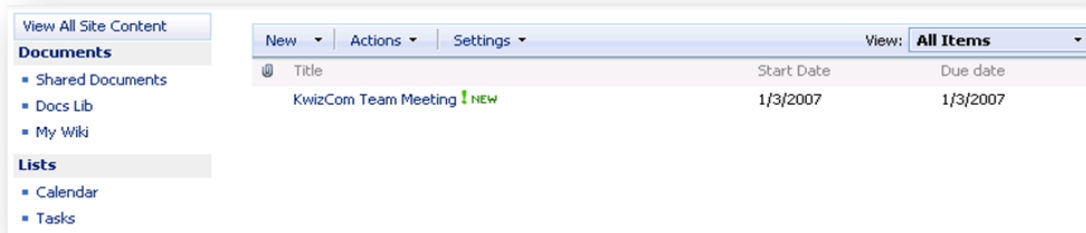
1. Product overview
2. Installation guide
3. Component activation
4. Administrator guide
5. FAQ

## Product Overview

SharePoint, by default, can't present lists web parts from other sites. For example, employees from one department can't view a list that is located on other departments' SharePoint sites.

When using the **KWizCom Remote List Viewer web part** in your SharePoint site, you can display remote lists that are located on other SharePoint sites, and even on other SharePoint servers (on the same server farm).

The Remote List Viewer web part looks like the regular SharePoint List web part:



Also, you can manage the displayed items (edit, view properties etc.) - same way as with the regular SharePoint list web part.

In addition, the Remote List Viewer web part displays the remote list's available views, enabling users to toggle between views (not available with the SharePoint list web parts).



## Key Features

<b>Feature</b>	<b>KWizCom Remote List Viewer</b>	<b>SharePoint 2007/2010/2013 out-of-the-box</b>
View and manage SharePoint lists/libraries located on other sites/web application/servers (on the same farm).	✓	
Enable users to toggle between views of the remote list.	✓	
Hide the toolbar of the remote list	✓	



# Installation

## Software prerequisites

### Server Requirements

1. SharePoint 2007 / WSS 3.0 or
2. SharePoint Server/Foundation 2010
3. SharePoint Server/Foundation 2013

### Client PC Requirements

1. Windows 7+
2. Microsoft Internet Explorer 9+, Mozilla Firefox (Latest version), Google Chrome (Latest version).

## Installation Procedure

### SharePoint 2007

The Remote List Viewer web part must be installed both on the SharePoint server where it will be displayed and on the SharePoint server/s where the remote list/s is located.

1. Log in using SharePoint administrator account to your SharePoint server.
2. Unzip the KWizCom Remote List Viewer web part zip file on your WSS/MOSS server.
3. Double-click the .msi file in order to begin the web installation.
  - When the installation process is complete it will recycle all application pools automatically.



## SharePoint 2010/2013

1. Log in as SharePoint administrator account to your SharePoint front-end server.
2. Download the product's latest evaluation version (zip file) from KWizCom's internet web site. This evaluation version is fully functional for 30 days.
3. Download the KWizCom SharePoint Foundation zip file:

SharePoint 2010:

<http://www.kwizcom.com/objects/KWizCom%20SharePoint%202010%20Foundation/KWizCom%20SharePoint%20Foundation.zip>

SharePoint 2013:

<http://www.kwizcom.com/objects/KWizCom%20SharePoint%202010%20Foundation/KWizCom%20SharePoint%20Foundation%202013.zip>

### **REMARK:**

***KWizCom SharePoint Foundation is a WSP package that includes all KWizCom's shared utilities and licensing modules for SharePoint 2010/2013.***

4. Extract both zip files' content into the same folder on your SharePoint's disk. You will need now to install and deploy these standard SharePoint WSP packages. This can be done by using SharePoint's stsadm/Powershell tools, according to Microsoft's guidelines for installing WSP packages.
5. **For a much quicker automatic installation**, right-click the Powershell script file "**SP-WSPsInstaller.ps1**" and select "Run with Powershell". This will start the automatic installation and deployment process.
6. At the end of the installation process, you should see all packages deployed in the Central Admin "Server Solutions" page, and the KWizCom SharePoint Foundation package should be deployed also in the Central Admin web application.



## Post Installation

### SharePoint 2007

1. After completion of the installation, you will see a new KWizCom entry in Windows **Start -> All Programs -> KWizCom** containing the following programs:



#### **About Remote List Viewer web part**

Display General Information about the component.



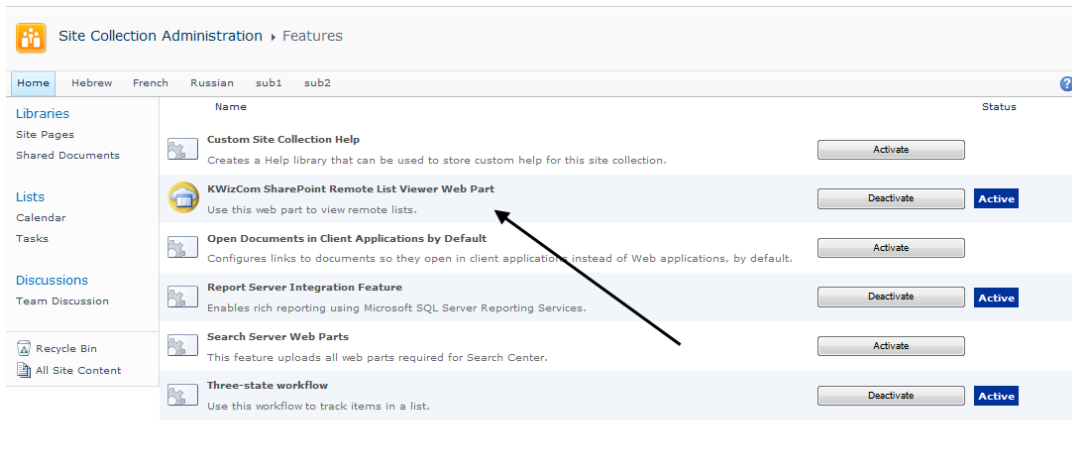
#### **Activate Remote List Viewer web part**

This utility enables you (the SharePoint Administrator) to activate the downloaded evaluation version.

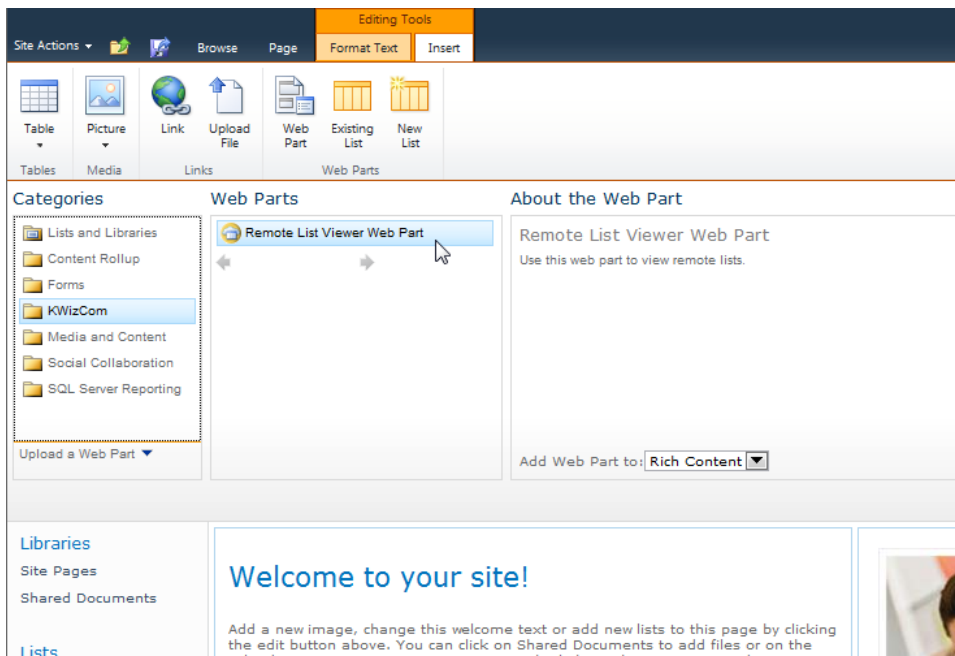
2. When you browse your SharePoint Portal/ Windows SharePoint services site, a new Remote List Viewer Web Part will be available for you under "Miscellaneous" group in the "Add Web Part" dialog or under "Server gallery" in the "Advanced Web Part Gallery".

### SharePoint 2010/2013

1. After completion of the installation you will need to activate the "KWizCom Remote List Viewer web part" site collection feature in the site collections where you want the web part to be used:



- Once the site collection feature has been activated, you will be able to use the SharePoint Remote List Viewer web part, that will be available in the web part gallery, under the “KWizCom” category:





## **Un-installation**

### **SharePoint 2007 server**

1. Log in using SharePoint administrator account to your SharePoint front-end server.
2. Go to Control Panel and double-click Add or Remove Programs.
3. Select product entry and click Remove button.
4. Click Yes to approve the removal of the component.
5. Once the product was un-installed, close the Add or Remove Programs screen.

### **SharePoint 2010/2013 server**

1. Retract and remove the solution using SharePoint central admin or by using stsadm/powershell command line.



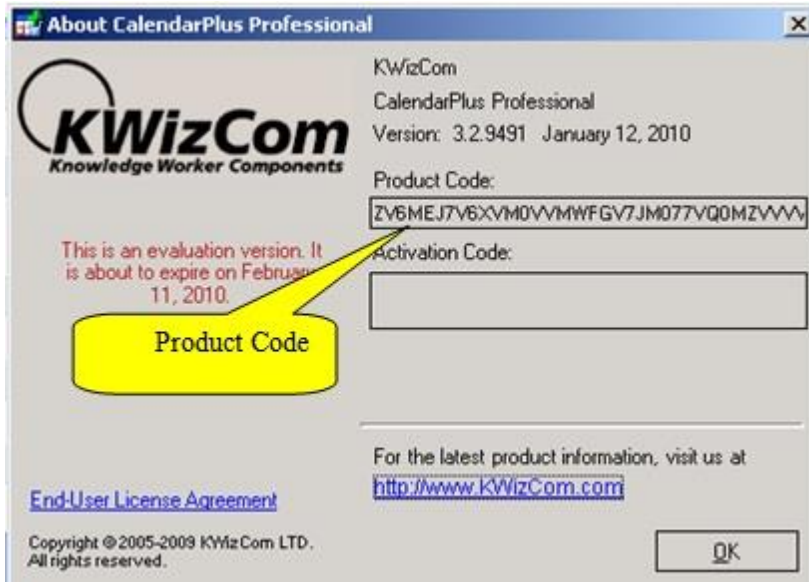
## Component Activation

KWizCom components are available for evaluation prior to purchase. This way you can try our components and verify that they indeed meet your needs. An evaluation version for each KWizCom component contains all features of the component's production version. The only difference is that an evaluation version is time-limited, and will operate for a period of one month.


Once you decide to order a KWizCom component, you will need to follow the following steps:

### SharePoint 2007

1. Order the component on the KWizCom website – [www.KWizCom.com](http://www.KWizCom.com).
2. Send us the installed evaluation version's *product Code* (you will see the product Code on the "About" product page:



Please use the [Activation Request web form](#), on KWizCom web site to send us your product code.

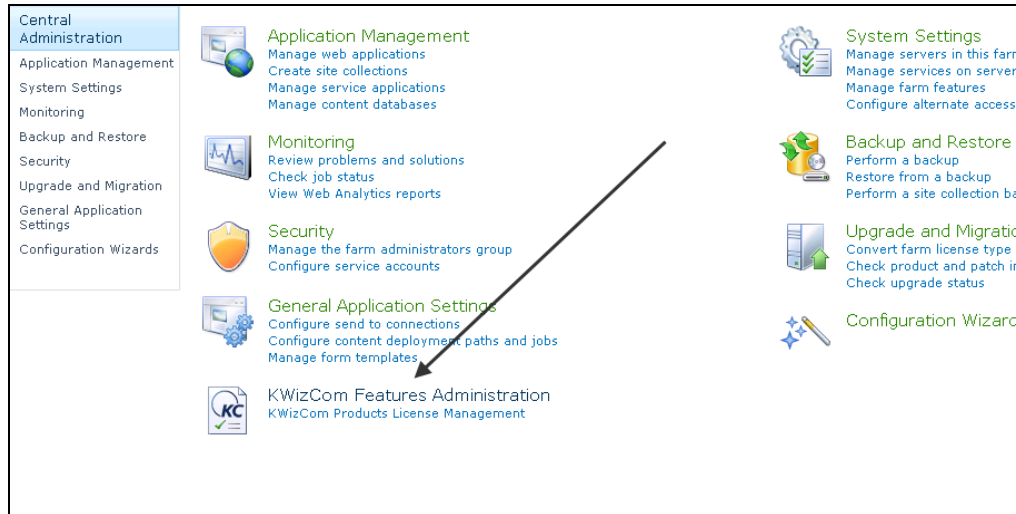
3. Get the component activation key – this key will be sent to you by email once your order is processed.
4. Activate your installed evaluation version -  
click **Start -> All Programs -> KWizCom -> SharePoint Remote List Viewer Web Part->**  **Activate SharePoint Remote List Viewer Web Part**

## SharePoint 2010/2013

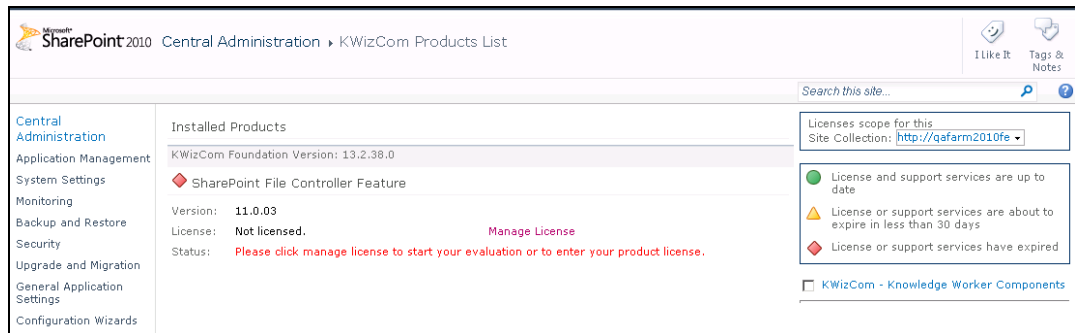
1. Order the product on the KWizCom website – [www.KWizCom.com](http://www.KWizCom.com), or contact our sales team at [sales@kwizcom.com](mailto:sales@kwizcom.com).

2. After the order was made, you can activate your installed evaluation version.  
Activation is done by the following steps:

a. Open SharePoint Central Admin. On the main “Central Administration” page, you will see the “KWizCom Features Administration” icon:



b. Click the KWizCom Features Administration icon. You will be redirected to a page that allows you to manage all your installed KWizCom products’ licenses:



- c. Click the “Manage License” link next to the product that you wish to activate. You will be redirected to that product’s license management page:

Product Information	
Name:	SharePoint File Controller Feature
Version:	11.0.03
Farm License	
Farm license applies to all site collections in your farm.	
Product Code:	Not requested <a href="#">Request product code and start your evaluation license now!</a>
Web application or site collection license management	
If you have a license for one web application or site collection, you can enter it here. Simply choose the site collection you wish to activate the license on from the picker and enter the I	
Site Collection:	<a href="http://qafarm2010fe">http://qafarm2010fe</a> ▾
Use the form below to activate <b>SharePoint File Controller Feature</b> on one the selected site collection or web application only.	
Web Application License	
Web application license applies to all site collections under the same URL, for example: http://sharepoint, http://sharepoint/sites/sales etc...	
Product Code:	Not requested <a href="#">Request product code and start your evaluation license now!</a>
Site Collection License	
Site collection license applies only to one specific site and it's sub sites.	
Product Code:	Not requested <a href="#">Request product code and start your evaluation license now!</a>

- d. Click on the “Request product code and start your evaluation now” link, under the required license type (Farm, Web application, Site Collection).  
A product code will be generated and displayed as in the following screenshot:

Product Information

Name: SharePoint File Controller Feature  
Version: 11.0.03

Farm License

Farm license applies to all site collections in your farm.

Product Code: TNWV07J8[07QZMJUVEVHJ8MMEVH7QMM57885VVV5JVM-.5VQMUM.MM]MVNXJX [Copy to clipboard](#)

Activation Code:  [Activate now!](#)

License Notifications:  [Update](#)  
Optionally, enter your email address to get notified when your license is exceeded or about to expire. To enter more than one email address, separate each email address with a comma.

License type: Evaluation  
Expiration: Thursday, November 18, 2010

Web application or site collection license management

If you have a license for one web application or site collection, you can enter it here. Simply choose the site collection you wish to activate the license on from the Site Collection dropdown.

Site Collection: <http://qafarm2010fe>

Use the form below to activate **SharePoint File Controller Feature** on one the selected site collection or web application only.

Web Application License

Web application license applies to all site collections under the same URL, for example: http://sharepoint, http://sharepoint/sites/sales etc...

Product Code: **Not requested** [Request product code and start your evaluation license now!](#)

Site Collection License

- e. Copy the product code.
- f. Browse the *Product Activation Request* page on KWizCom’s web site: <http://www.kwizcom.com/ProductReg>.

**Product Activation Request**

In order to deactivate a product please [click here](#).

This Product Activation Form is used to get your product activation key after you have purchased the product.

Please fill out the following form. Once we get your product activation request, a product activation key will be sent to you by email, along with the activation process description.

\*Customer Name:

\*E-mail address:

\*Share-It Order /Invoice Number:

\*Product Code:

\*License Type:

Copy your *Product Code* into the “Product Code” field, and after you fill-out all other form fields, click “Send Activation Request” button.



- g. Once your order is confirmed, you will receive the Activation Code for your product by email.
- h. Copy the activation code into the "Activation Code" field in the product's license management page and click "Activate now!" link.

Product Information	
Name:	SharePoint File Controller Feature
Version:	11.0.03
Farm License	
Farm license applies to all site collections in your farm.	
Product Code:	TNWW07J8[07QZMJUVEVHJ8MMEVHPQMM57885VVVV5JVM-.5VQMUM.MM]MVNXJX <a href="#">Copy to clipboard</a>
Activation Code:	<input type="text"/> <a href="#">Activate now!</a>
License Notifications:	<input type="text"/> <a href="#">Update</a>
Optionally, enter your email address to get notified when your license is exceeded or about to expire. To enter more than one	
License type:	Evaluation
Expiration:	Thursday, November 18, 2010
Web application or site collection license management	
If you have a license for one web application or site collection, you can enter it here. Simply choose the site collection you wish to activate the license	
Site Collection:	<a href="http://qafarm2010fe">http://qafarm2010fe</a> ▼
Use the form below to activate <b>SharePoint File Controller Feature</b> on one the selected site collection or web application only.	
Web Application License	
Web application license applies to all site collections under the same URL, for example: http://sharepoint, http://sharepoint/sites/sales etc...	
Product Code:	Not requested <a href="#">Request product code and start your evaluation license now!</a>
Site Collection License	
Site collection license applies only to one specific site and it's sub sites.	

That's it! Your product is now fully activated.

# Administrator Guide

## Introduction

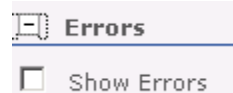
When you browse your SharePoint server/ Windows SharePoint services site, a new Remote List Viewer web part can be added from "Miscellaneous" group in the "Add Web Part" dialog or from "Server gallery" in the "Advanced Web Part Gallery".



## Web Part Properties & Configuration Options

The following sections provide details about each category.

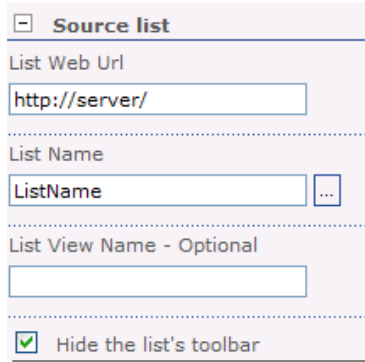
### Errors



This section provides you with the option to show errors when the web part is not working properly (for debug & support purposes).

Check this option to view error details and uncheck it if these details do not need to be shown.

## Source List



The screenshot shows a configuration form titled "Source list" with a collapse icon. It contains the following fields and options:

- List Web Url:** A text input field containing "http://server/".
- List Name:** A text input field containing "ListName" and a small square button with three dots to its right.
- List View Name - Optional:** An empty text input field.
- Hide the list's toolbar:** A checked checkbox.

This section includes Remote List connection details:

- List Web URL- SharePoint List web address - enter the URL without the List Name.  
You can type relative links and also use the following tokens: [current site], [site collection], [server].
- List Name - SharePoint List name - enter the full List name.
- List View Name (optional) - Remote List View Name - here you can enter a specific List View name to show in default.
- Hide the list's toolbar (optional)- check this checkbox if you want to hide the remote list's toolbar.



## **FAQ**

### **What's the purpose of the Remote List Viewer web part?**

The KWizCom Remote List Viewer web part enables you to display on your site/s lists that are physically located in other sites and even other SharePoint servers (located on the same farm).

### **Does it work on WSS/MOSS?**

The KWizCom Remote List Viewer web part works both on WSS 3.0 / MOSS 2007 and on SharePoint Server/Foundation 2010.

### **Do I have to install anything on my company's client-PCs?**

No. KWizCom Remote List Viewer web part is a server installation.

### **How to hide the remote list's toolbar from the Remote List Viewer web part?**

In the configuration window of KWizCom Remote List Viewer - open the Source list category and check the "Hide the list's toolbar" checkbox.

### **Does the add-on work with SharePoint 2010/2013 server/foundation?**

Yes.



## Technical Support

You can obtain technical support using any of the following methods:

### **The KWizCom Web site**

The KWizCom website at [www.KWizCom.com](http://www.KWizCom.com) contains the most updated valuable information, including:

- Answers to frequently asked questions (FAQ's) about our products – usability and technical questions.
- Product updates, which provide you with bug fixes and new features.

### **The Web Form**

For technical support through the Internet, please fill in our [support web form on our web site](#)

For more information on technical support, please review our [support programs page](#).