

KWizCom Corporation



Copy/Move SharePoint Content

User Guide

Copyright © 2005-2014 KWizCom Corporation. All rights reserved.

Company Headquarters

KWizCom

95 Mural Street, Suite 600

Richmond Hill, ON

L4B 3G2 Canada

E-mail: info@KWizCom.com

Web site: <http://www.kwizcom.com>

Sales

E-mail: sales@KWizCom.com

Telephone: +1-905-370-0333

CONTENTS

Contents	3
introduction	4
General	4
Product Overview	5
Key Features	6
Special cases	7
Installation Guide	9
Software Requirements	9
Server Requirements	9
Client Requirements	9
Installation Procedure	9
SharePoint 2010/2013	9
post Installation	10
SharePoint 2010/2013	10
Un-Installation Procedure.....	11
SharePoint 2010/2013	11
Administration Guide	12
Product Activation	12
SharePoint 2010/2013	12
Component Localization	16
FAQ.....	17
in which SharePoint version this feature is available?	17

INTRODUCTION

GENERAL

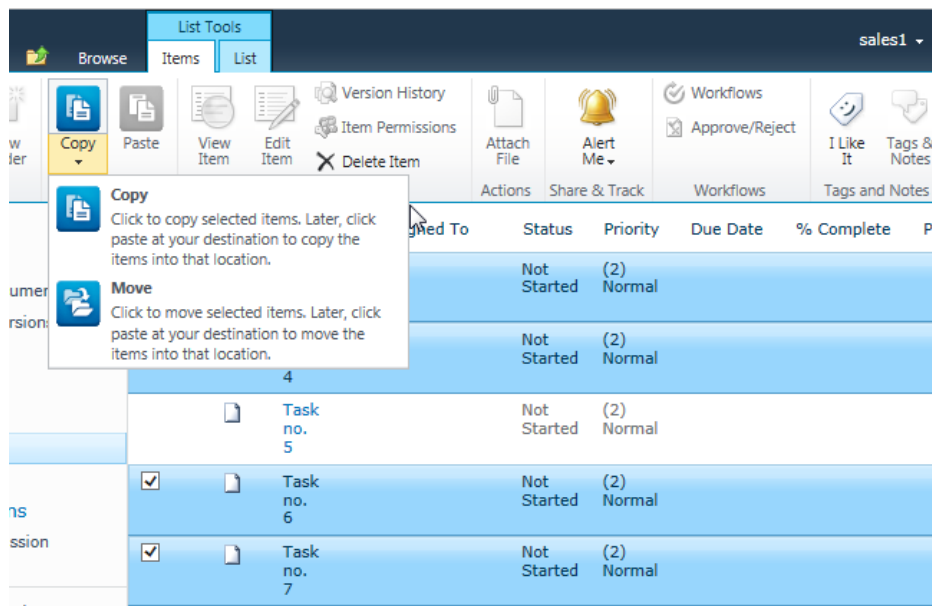
This document provides all the information needed to install, evaluate and deploy this KWizCom product:

- Introduction
- Installation Guide
- Administration Guide
- FAQ

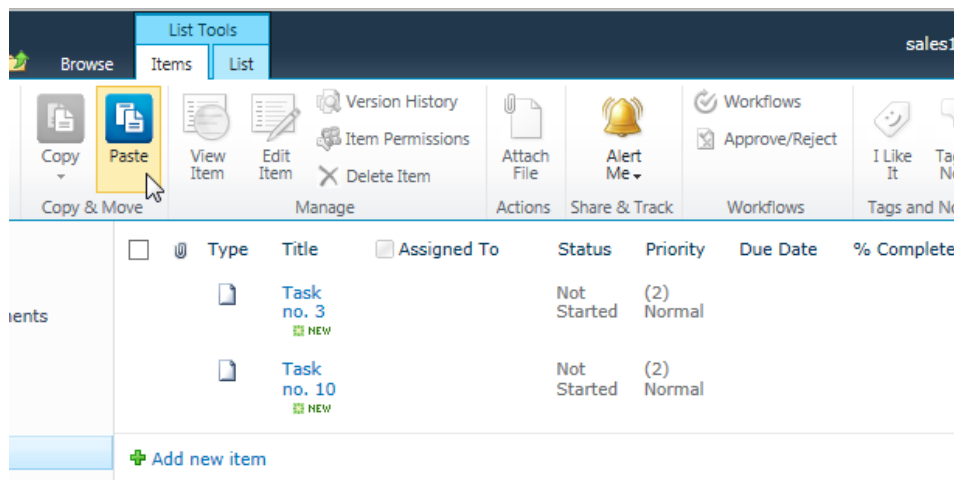
PRODUCT OVERVIEW

The KWizCom Copy/Move SharePoint Content add-on allows end-users to copy or move SharePoint list items, calendar events, documents, folders and document sets across the SharePoint farm.

All you need to do is use the checkboxes to select the items you wish to copy or move, click the **Copy** or **Move** ribbon button.



Later, browse to your destination list, library or folder and click the Paste ribbon button to complete the copy or move action.



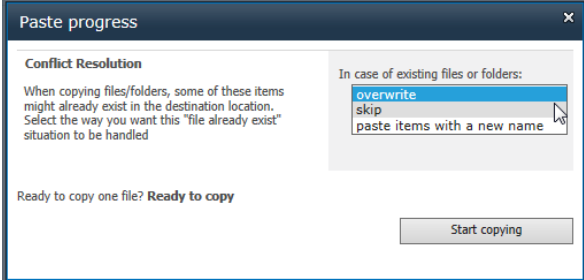
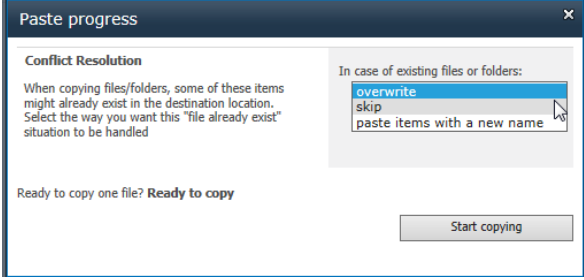
Items are copied with all meta data, original creation date and version history (if enabled in both the source and target locations).

KEY FEATURES

Feature	KWizCom Copy/Move SharePoint Content
Bulk copy or move content: documents, list items, Calendar events, web part pages, publishing pages, wiki pages, images, folders, document sets	√
Copy or move content and properties, including original “created by”, “Created”, “Modified by” and “Modified” property values.	√
Keep version history during copy/move	√
Copy/move list items with their file attachments	√
Duplicate documents and list items	√
Automatic column mapping between origin and target lists	√
Copy/Move across site collections and across web applications	√
Allow overwrite existing items, keep existing items or automatically create new items in case the copied documents/folder already exist in the target library	√
.NET and Web API	√
Audit logging	√
Multi-lingual	√
Cross-browser support	√

SPECIAL CASES

The following tables includes different copy/move scenarios and the expected result:

Scenario	Result
Copy items from <i>Src</i> to <i>Dst</i>	Items are copied to <i>Dst</i> .
Move items from <i>Src</i> to <i>Dst</i>	Items are copied to <i>Dst</i> and deleted from <i>Src</i> (moved to Recycle Bin).
Copy/Move Folder from <i>Src</i> to <i>Dst</i>	The folder and all its contents are copied/moved from <i>Src</i> to <i>Dst</i> .
Copy document/folder from <i>Src</i> to <i>Dst</i> , where an existing document/folder with the same name already exists.	<p>When pasting the user can choose one of 3 options to resolve the collision:</p>  <ol style="list-style-type: none"> 1. Overwrite – the copied document/folder replaces the existing one. 2. Skip – the document/folder is not copied. 3. Paste items with a new name – the document/folder is copied and given a new name by adding “_[counter]” suffix to its name.
Move document/folder from <i>Src</i> to <i>Dst</i> , where an existing document/folder with the same name already exists.	<p>When pasting the user can choose one of 3 options to resolve the collision:</p>  <ol style="list-style-type: none"> 1. Overwrite – the copied document/folder replaces the existing one in <i>Dst</i>.

Scenario	Result
	<ol style="list-style-type: none"> 2. Skip – the document/folder is not moved, and therefore is not deleted from the <i>Src</i> location. 3. Paste items with a new name – the document/folder is moved and given a new name by adding “_[counter]” suffix to its name.
Copy/Move an item with various columns from <i>Src</i> to <i>Dst</i>	<p>Column values are copied to their automatically-mapped columns, according to the following logic:</p> <ol style="list-style-type: none"> 1. If in <i>Dst</i> list there’s a column with the same name and type 2. For Lookup column – if in <i>Dst</i> there’s a lookup column with the same name and pointing to the exact same list as the one in the <i>Src</i> list. 3. If no such column found, then the column valued is not copied.
Copy/Move item to a list/library configured to require approval (with or without versioning)	<p>If the end-user has approval permissions on the target location, these items will keep their approval status and will not become “Pending”.</p> <p>Also, because the target list is configured to support moderation, there’s a need to use the SharePoint publish API which changes the “Modified” timestamp.</p>
Copy/Move items from <i>Src</i> to <i>Dst</i> , both configured with version history support.	Items are copied with their version history.

INSTALLATION GUIDE

SOFTWARE REQUIREMENTS

SERVER REQUIREMENTS

- SharePoint Server/Foundation 2010
- SharePoint Server/Foundation 2013

CLIENT REQUIREMENTS

- Windows 7+
- Microsoft Internet Explorer 8+, Mozilla Firefox (Latest version), Google Chrome (Latest version).

INSTALLATION PROCEDURE

SHAREPOINT 2010/2013

1. Log in as SharePoint administrator account to your SharePoint front-end server.
2. Browse the product's page on KWizCom's website and click the "Go" link under the "Install using our Web Installer" section.

This will start the KWizCom web installer.

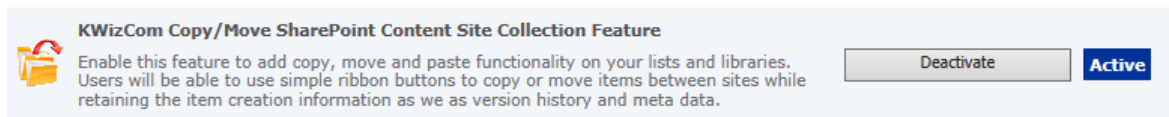
Note: The KWizCom Web Installer will automatically offer you to upgrade other existing KWizCom products on your farm, in case you have old versions installed. You can check which products you wish to update at this time.

3. In case you prefer just to download the relevant .wsp packages and manually deploy them, then in the web installer UI check the "Download only" option (3rd page in the installer's wizard). When the installer finishes you will be able to go to the installer's folder on your server, and install the KWizCom packages by simply running the "SP-WSPInstaller" powershell script.
4. At the end of the installation process, you should see all packages deployed in the Central Admin "Server Solutions" page, and the KWizCom SharePoint Foundation package should be deployed also in the **Central Admin web application**.

POST INSTALLATION

SHAREPOINT 2010/2013

1. After completing the package installation and deployment, activate the product's feature in the site collections where you want it to be available:



KWizCom Copy/Move SharePoint Content Site Collection Feature

Enable this feature to add copy, move and paste functionality on your lists and libraries. Users will be able to use simple ribbon buttons to copy or move items between sites while retaining the item creation information as well as version history and meta data.

Deactivate **Active**

Activating this feature will make the Copy/Move ribbon buttons visible in all lists and libraries' ribbon panels.

UN-INSTALLATION PROCEDURE

SHAREPOINT 2010/2013

1. Retract the solution using SharePoint central admin or by using stsadm/powershell command line.

ADMINISTRATION GUIDE

This section describes all administration activities related to KWizCom Data View Plus web part.

PRODUCT ACTIVATION

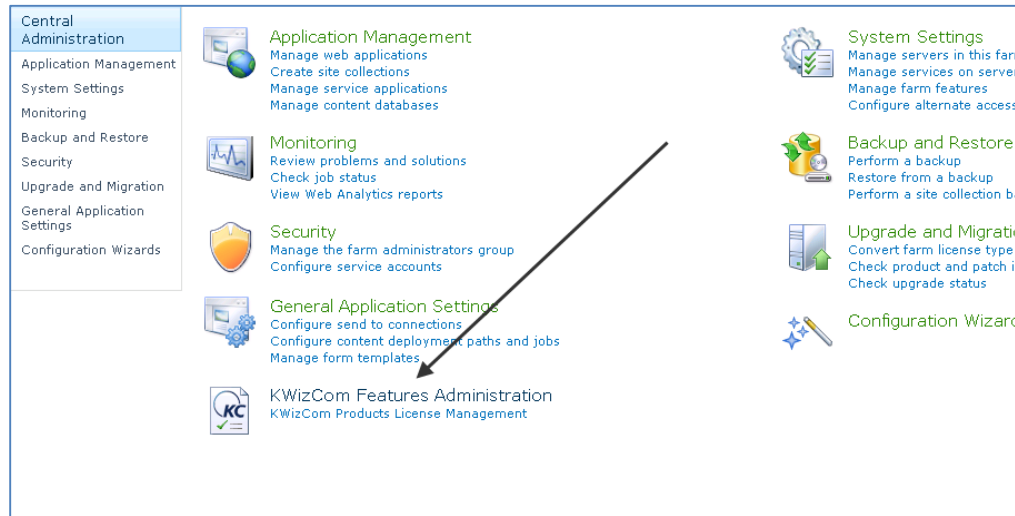
KWizCom products are available for evaluation prior to purchase.

This way you can try our components and verify that they indeed meet your needs. Each evaluation version contains all features of the component's production version. The only difference between the versions is that the evaluation version is time-limited and will operate for a period of one month.

Once you decide to purchase a KWizCom component you will need to **order** and then to **activate** the product. The steps that need to be taken next are listed below.

SHAREPOINT 2010/2013

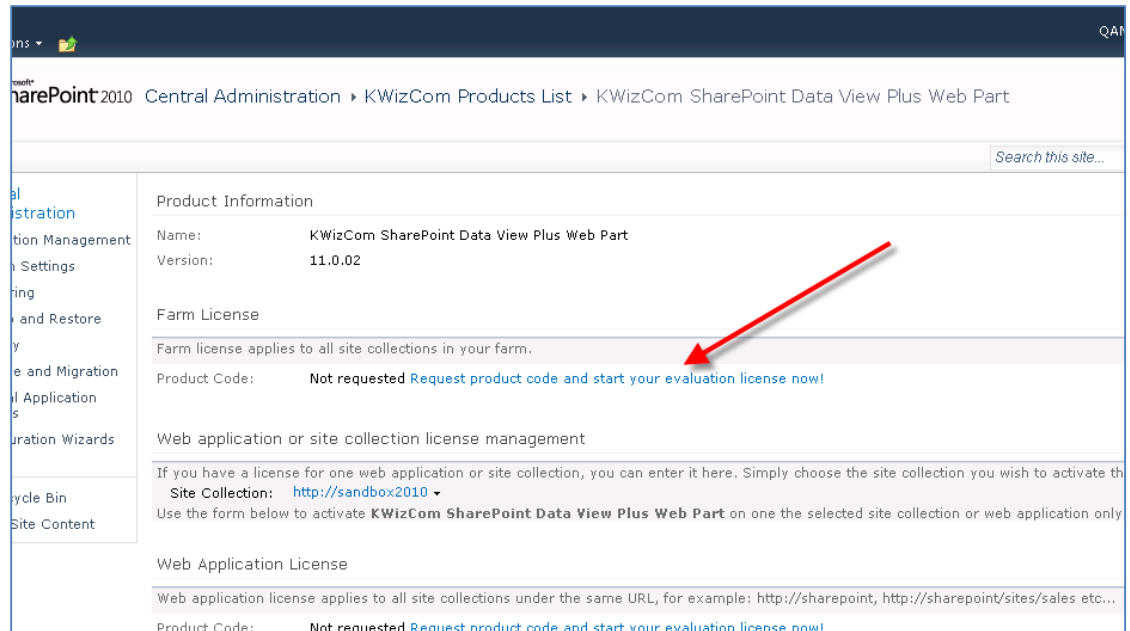
1. Order the product on the KWizCom website – www.KWizCom.com, or contact our sales team at sales@kwizcom.com.
2. After the order was made, you can activate your installed evaluation version. Activation is done by the following steps:
 - a. Open SharePoint Central Admin. On the main “Central Administration” page, you will see the “KWizCom Features Administration” icon:



- b. Click the *KWizCom Product Licenses Management* link. You will be redirected to a page that allows you to manage all your installed KWizCom products' licenses:

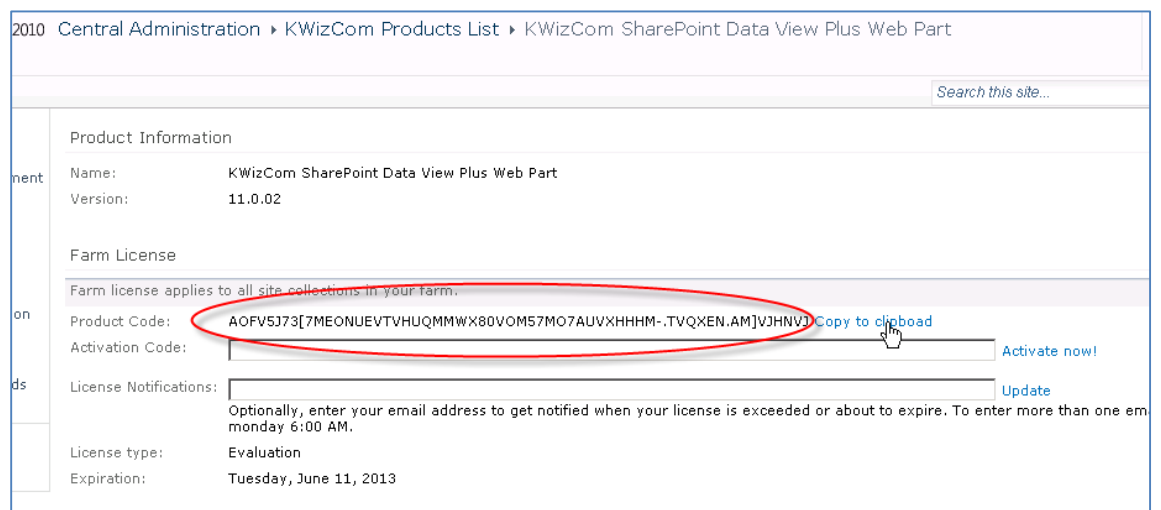
Version:	13.1.00	
License:	Farm license, standard edition.	Manage License
Status:	Support services included.	
	KWizCom User/Group Redirection web part	
Version:	11.1.00	
License:	Farm license, standard edition.	Manage License
Status:	Support services included.	
	SharePoint Forum Web Part	
Version:	12.1.00	
License:	Farm license, standard edition.	Manage License
Status:	Support services included.	
	KWizCom SharePoint Data View Plus Web Part	
Version:	11.0.02	
License:	Not licensed.	Manage License
Status:	Please click manage license to start your evaluation or to enter your product license.	
	SharePoint List Filter Plus Web Part	
Version:	14.3.04	
License:	Farm license, standard edition.	Manage License
Status:	Support services included.	
	SharePoint CalendarPlus Web Part	
Version:	14.3.00	

- c. Click the "Manage License" link next to the product that you wish to activate. You will be redirected to that product's license management page:



- d. Click on the “Request product code and start your evaluation now” link, under the required license type (Farm, Web application, Site Collection).

A product code will be generated and displayed as in the following screenshot:



- e. Copy the product code.
- f. Browse the *Product Activation Request* page on KWizCom’s web site:
<http://www.kwizcom.com/ProductReg>.

Product Activation Request

In order to deactivate a product please [click here](#).

This Product Activation Form is used to get your product activation key after you have purchased the product.

Please fill out the following form. Once we get your product activation request, a product activation key will be sent to you by email, along with the activation process description.

*Customer Name:

*E-mail address:

*Share-It Order/Invoice Number:

*Product Code:

*License Type:

Copy your *Product Code* into the “Product Code” field, and after you fill-out all other form fields, click “Send Activation Request button.

- g. Once your order is confirmed, you will receive the Activation Code for your product by email.
- h. Copy the activation code into the “Activation Code” field in the product’s license management page and click “Activate now!” link.

Search this site...

Product Information

Name: KWizCom SharePoint Data View Plus Web Part
Version: 11.0.02

Farm License

Farm license applies to all site collections in your farm.

Product Code: AOFV5J73[7MEONUEVTVHUQMMWX80VOM57MO7AUUVXHHHM-.TVOXEN-AMJWJHNVJ [Copy to clipboard](#)

Activation Code: [Activate now!](#)

License Notifications: [Update](#)

License type: Evaluation
Expiration: Tuesday, June 11, 2013

That’s it! Your product is now fully activated.

COMPONENT LOCALIZATION

Every KWizCom component comes with localization utility called "Resource File Editor" that enables translation of the component user interface to any required language.

This section describes this utility and the translation process.

SharePoint 2010/2013

1. Go to: C:\Program Files\Common Files\Microsoft Shared\Web Server Extensions\14\15\Resources.
2. Copy the product's resource file: `KWizCom.SharePoint.CopyMoveSPContent.resx` to a new resource file, and add to its name the requested language's suffix.

Example: to create a French resource file, copy the file to the following file name:

`KWizCom.SharePoint.CopyMoveSPContent.fr-FR.resx`

3. Update the copied resource file and replace the English strings with the translated strings. The translatable strings are located inside the `<data name>` nodes, in their `<value>` attributes.

Example:

```
<data name="btnAccept" xml:space="preserve">
  <value>Accept Changes</value>
</data>
```

4. Save the new resource file.

REMARK:

You can also use the [KWizCom Resource Translator](#) Free utility to quickly translate any KWizCom add-on to your preferred language.

FAQ

IN WHICH SHAREPOINT VERSION THIS FEATURE IS AVAILABLE?

SharePoint 2010/2013 Foundation/Server.